

HOLLOWAY

BRIDPORT
£550 PCM



2ND FLOOR REFURBISHED OFFICE SUITE 390 sq ft

1 ROOM FULLY SERVICED MODERN AMENITIES

INCLUDING

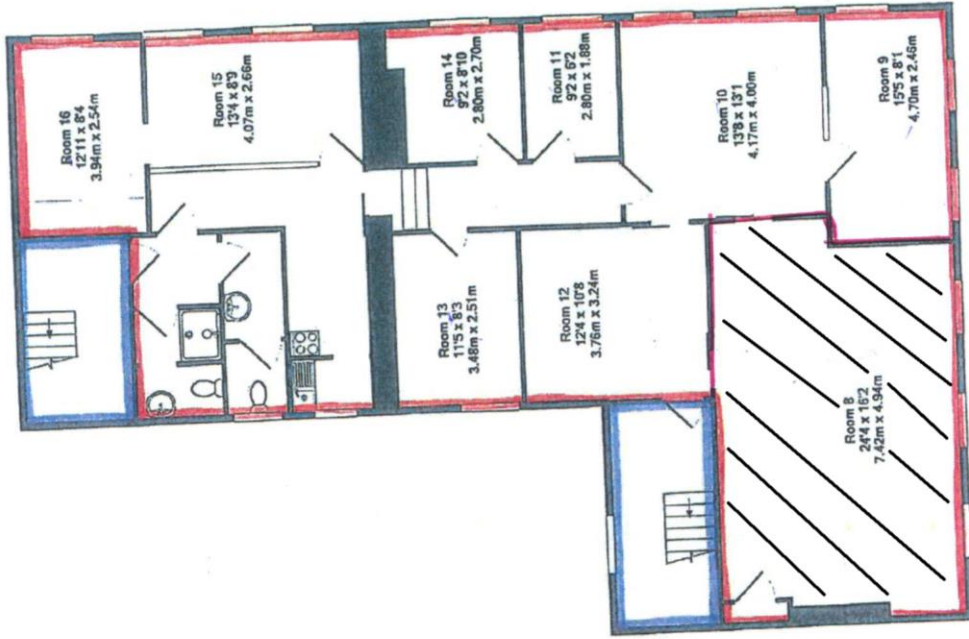
HEATING

ELECTRICS

BROADBAND

COUNCIL TAX

STAFF AND CONFERENCE FACILITIES

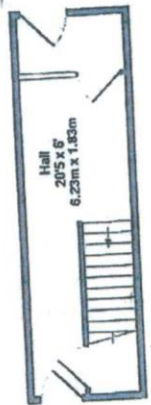


2ND FLOOR
APPROX. FLOOR
AREA 1792 SQ.FT.
(166.4 SQ.M.)

3 DOWNS ST BRIDPORT DT6 SJR
TOTAL APPROX. FLOOR AREA 3168 SQ.FT. (294.0 SQ.M.)
Measurements are approximate. Not to scale. Illustrative purposes only.
Made with Inktoplot C8013



1ST FLOOR
APPROX. FLOOR
AREA 1798 SQ.FT.
(167.1 SQ.M.)



ENTRANCE FLOOR
APPROX. FLOOR
AREA 178 SQ.FT.
(16.5 SQ.M.)